



**INNOVATIVE ECONOMY**  
NATIONAL COHESION STRATEGY



**MINISTRY  
ECONOMY**

**EUROPEAN UNION**  
EUROPEAN REGIONAL  
DEVELOPMENT FUND



# CATALOGUE OF PRODUCTS 2015





# 10 years



*On the occasion of the 10th anniversary of founding KOSBUD we would like to thank and congratulate all those who participated in the development of our company. Thanking you for your trust and long-term cooperation, we wish you a lot of satisfaction, career success and all the best in your personal life.*

*Kosinski brothers*



# Table of Contents

Goods index



## decorative board

<b>Decorative board</b> TABULO	s.07
<b>Dispersion adhesive</b> TERMOLEP-D	s.07
<b>TABULO protective varnish</b>	s.07
<b>Acrylic stain</b>	s.07

## brick imitation klinkierit

<b>Decorative mortar</b> KLINKIERIT	s.08
<b>Type template brick</b>	s.08

## elevating plasters

<b>Acrylic plaster</b> ACRYLIT „baranek“	s.09
<b>Acrylic plaster</b> ACRYLIT „kornik“	s.09
<b>Silicone plaster</b> ACRYLIT-SL „baranek“	s.09
<b>Silicone plaster</b> ACRYLIT-SL „kornik“	s.09
<b>Silicone plaster</b> Acrylit-SLN „baranek“	s.09
<b>Silicate plaster</b> ACRYLIT-ST „baranek“	s.09
<b>Mosaic plaster</b> MOZALIT „fine-grained“	s.10
<b>Mosaic plaster</b> MOZALIT „coarse-grained“	s.10
<b>Grout for mosaic plaster with a bucket</b>	s.10
<b>Tinted Technical aggregate</b>	s.10
<b>Mineral textured plaster</b> MINERALIT „baranek“	s.10
<b>Decorative mortar</b> KLINKIERIT	s.10
<b>Decorative plaster</b> STONEHENGE	s.11
<b>Decorative plaster</b> VTG	s.11

## primers

<b>Acrylic primer</b> GRUNLIT with quartz sand	s.11
<b>Silicone primer</b> GRUNLIT-SL with quartz sand	s.11
<b>Silicate primer</b> GRUNLIT-ST with quartz sand	s.11
<b>Quartz primer</b> GRUNLIT-K	s.11
<b>Universal primer</b> GRUNLIT-U	s.12
<b>Deep penetrating primer</b> GRUNLIT-G	s.12

## elevation paints

<b>Acrylic paint</b> CHMURKA	s.12
<b>Silicone paint</b> CHMURKA-SL	s.12
<b>Silicate paint</b> CHMURKA-ST	s.12

## interior paints

<b>Latex paint luxury</b> ROYAL – COLOR	s.13
<b>Latex paint luxury</b> ROYAL – WHITE	s.13
<b>Interior latex paint</b> LATEX PAINT – FINISH	s.13
<b>Interior latex paint</b> LATEX PAINT – SPRINT	s.13

## adhesive isulation systems

<b>Adhesive mortar for polystyrene</b> TERMOLEP-S	s.13
<b>Adhesive mortar for polystyrene and immersing a grass fibre mat</b> TERMOLEP-U	s.13
<b>White universal adhesive for thermal insulation systems based on polystyrene</b> TERMOLEP-U	s.14
<b>Adhesive mortar for mineral wool</b> TERMOLEP-WU	s.14

## adhesives for tiles

<b>Adhesive mortar for ceramic tiles</b> TERMOLEP-G	s.14
<b>Adhesive mortar for ceramic tiles</b> TERMOLEP-GL	s.14
<b>Adhesive mortar for gres tiles</b> TERMOLEP-GR	s.14
<b>Elastic ceramic adhesive mortar</b> TERMOLEP-EL	s.14
<b>White highly elastic adhesive for stone</b> TERMOLEP-K	s.15

## masonry mortars and plastering

<b>Rough coat cement</b> SZPRYC	s.15
<b>Cement-lime plaster</b> TYNK-CW gray	s.15
<b>White cement-lime plaster</b> TYNK-CW white	s.15

## gypsum plasters, plasters, fillers

<b>Gypsum plaster manual</b> GTR	s.16
<b>Gypsum building plaster</b> GS 100	s.16
<b>White gypsum surface finishing</b> GS 200	s.16
<b>Luxury gypsum surface finishing</b> GS 300	s.16
<b>Dolomite gypsum surface finishing</b> GS 400	s.16
<b>Fiber-reinforced filler</b> GS 500	s.16
<b>Universal gypsum based adhesive</b> KGU	s.17

## water insulations

<b>Water insulation membrane – exterior</b> FOLIT-Z	s.17
<b>Water insulation cement mortar</b> HYDROLIT	s.17
<b>Flexible asphalt–rubber mass slightly resin-modified</b> IZOLIT-G	s.17
<b>Asphal - rubber mass resin-modified</b> IZOLIT- P	s.17
<b>Dispersive asphalt – rubber mass</b> DYSPERLIT	s.18
<b>Dispersive asphalt – rubber mass</b> STYRLIT	s.18
<b>Plastic roof cement</b> OLKOLIT	s.18
<b>Plastic roof cement roofing adhesive</b> OLKOLIT-PLUS	s.18
<b>COLD BITUMEN ADHESIVE</b>	s.18

## foams, weld

<b>Polyurethane gun</b> FOAM	s.19
<b>Polyurethane</b> FOAM	s.19
<b>Pistol Low-pressure Foam 45L</b>	s.19
<b>Polyurethane Adhesive for Styrofoam</b>	s.19
<b>The means for removing fungi and lichens</b> BIOLIT	s.19
<b>The means for removing fungi and lichens</b> BIOLIT PLUS	s.19

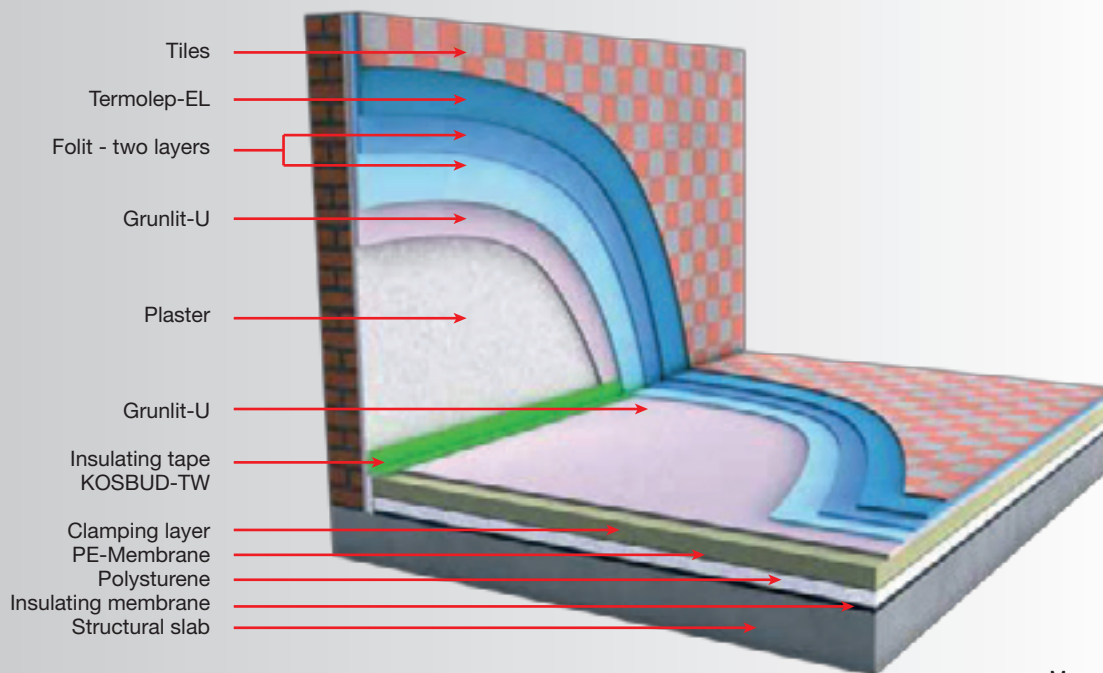
## supplementary materials

<b>Quartz Sand</b>	s.20
<b>Fiberglass mesh</b>	s.20
<b>Fiberglass mesh with measuring tape</b>	s.20
<b>Stakes to systems of warmer weathers with pin plastic / metal</b>	s.20

## accessories for plastering

<b>Spray aggregate</b> PST-2 STANDARD	s.20
<b>Spray aggregate</b> PST-3 STANDARD	s.21
<b>Spray aggregate</b> PST-5 STANDARD	s.21
<b>Spray Gun</b> PS-1	s.21
<b>Spray Gun</b> PS-2	s.21





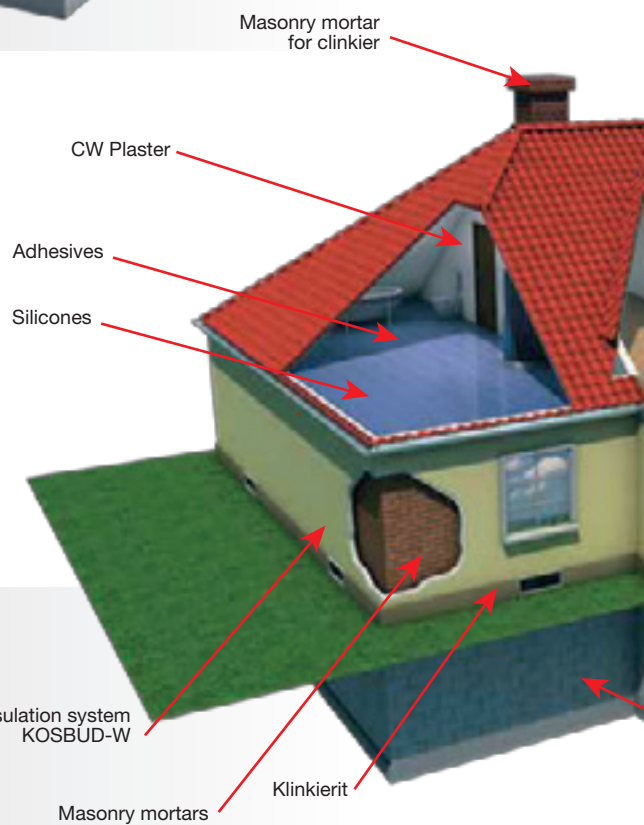
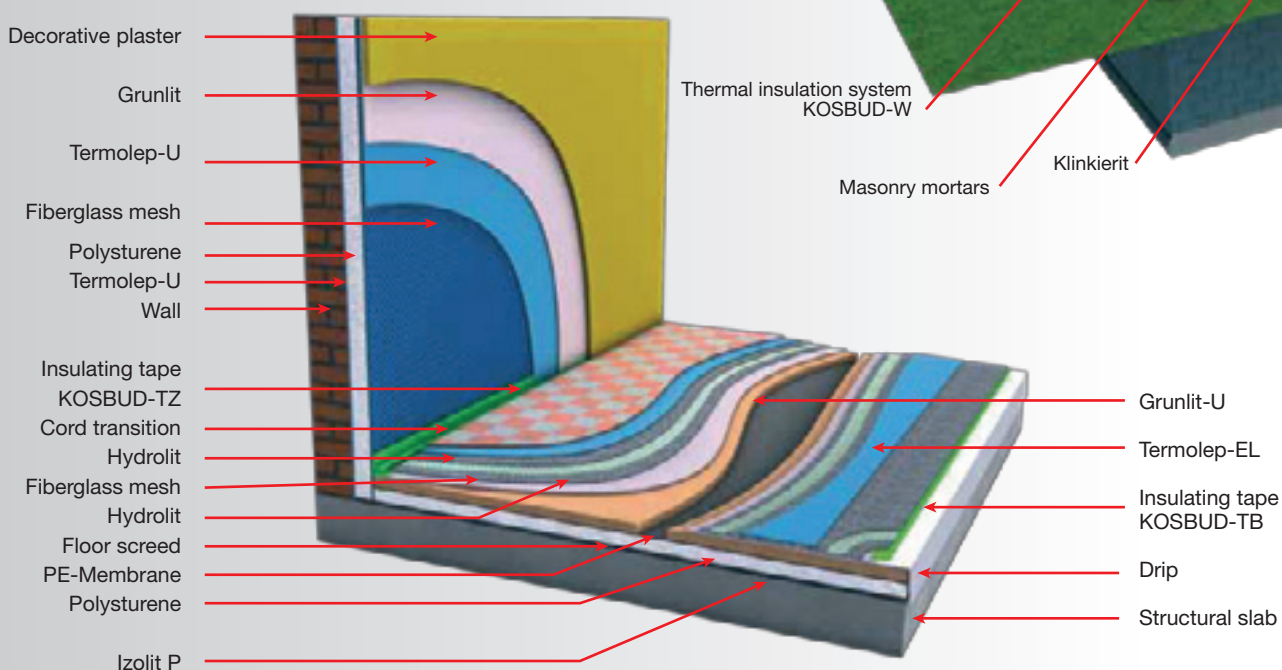
## SECTION WATER INSULATIONS

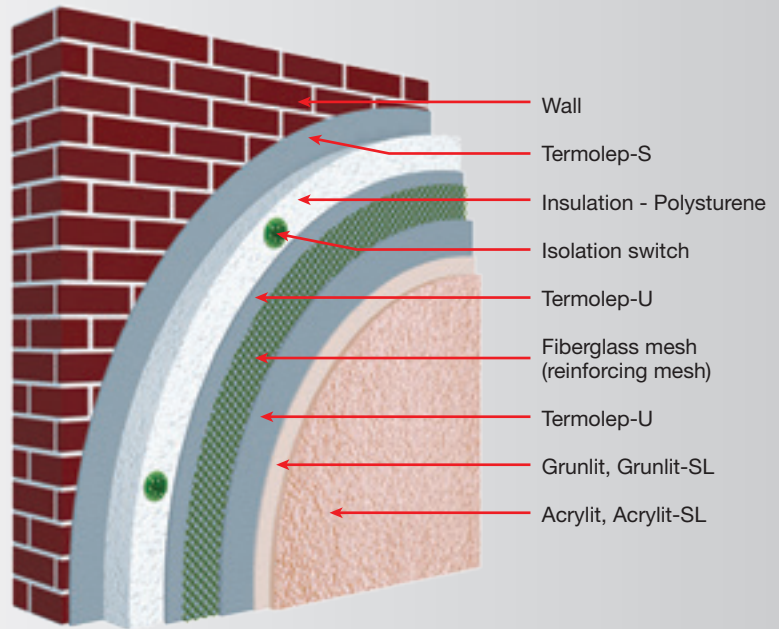
INSIDE THE BUILDING

## HOME TECHNOLOGY KOSBUD WATER INSULATIONS

## SECTION WATER INSULATIONS

OUTSIDE THE BUILDING

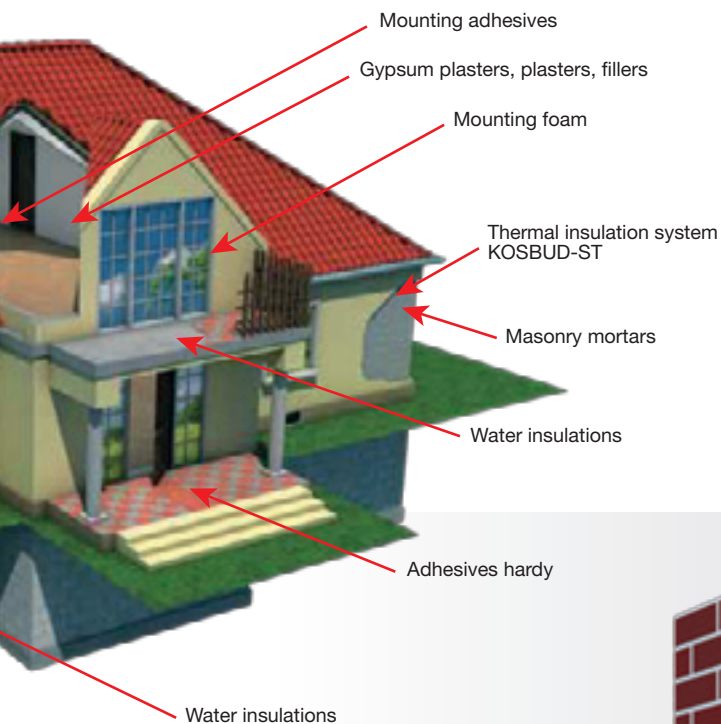




## THERMAL INSULATION SYSTEM

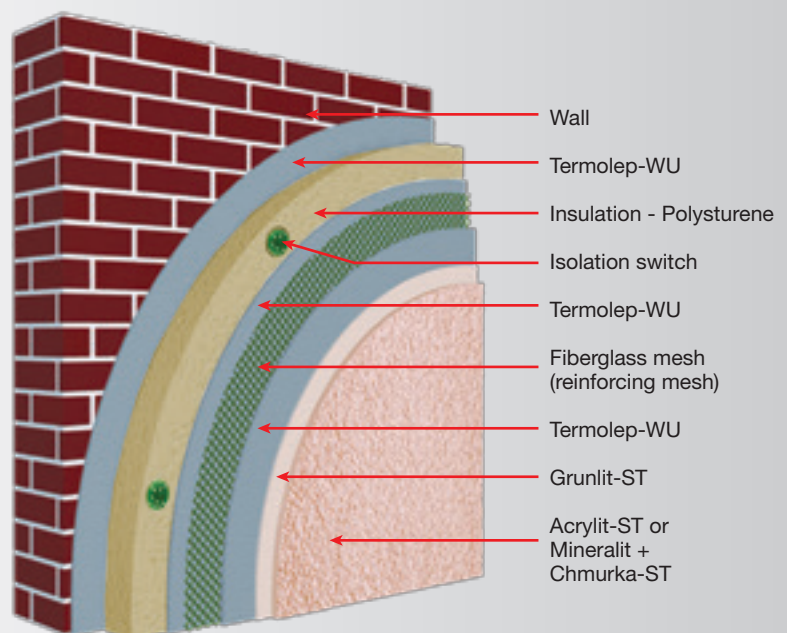
KOSBUD ST

## HOME TECHNOLOGY KOSBUD THERMAL INSULATION SYSTEM



## THERMAL INSULATION SYSTEM

KOSBUD W



# Elevation for years



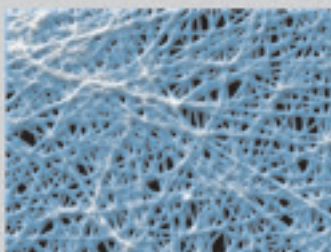
**Use of mica** - it was already used as a natural mineral in the Palaeolithic period, in ancient Egypt, Greek, Roman and Chinese civilizations as well as in New World Civilization. Added

to a thin-layer plaster it brightens the colour of the elevation and additionally makes it more resistant to UV rays by 30 %.



**KOSBUDPROTECT** – the application of this innovative formula creates an invisible coat on the outer layer of the elevation protecting it against the development of such microorganisms as algae, fungi and lichens. This is one of the most important additives that should be applied to plasters in our climate zone, as the synthetic dispersion being the main component of each

plaster combined with good environmental conditions are conducive to the growth of microorganisms. This is especially important for elevations located near bodies of water, dense foliage and places isolated from the sun and wind.



**MICROFIBERS** – included in the adhesive mortar **TERMOLEP-U** form an internal reinforcement, which additionally enhances the reinforcement layer of our elevation. Therefore the elevation becomes more resistant to any mechanical shock. The additional property obtained by the adhesive with microfibers is increased flexibility. The amplitude of temperatures at elevation in our climate can reach even 90°C

during the year (-30°C in winter, in summer the southern wall of the elevation can warm up even to 60°C). Such changes in temperature forces the strength to all kinds of stresses from the reinforcement layer (glass fibre mat immersed in the adhesive mortar **TERMOLEP-U**) throughout the whole year. The adhesives enriched with microfibers far better undergo all strength tests that are carried out on them.



**FUNCTIONAL MINERAL** – the latest achievement on the market for construction chemicals additives used in **ACRYLIT** plaster with two functions:

- strengthens bonds between the minerals contained in plasters and additionally hardens the outer part of the elevation against mechanical shock and high amplitude temperature,

- increases the hydrophobicity of the plaster, therefore the elevation becomes more resistant to dirt. As a result of the increased surface tension water does not pour over the structure, but it flows down as from the „greasy frying pan” and collects all dust particles.



# decorative board

## Decorative board

### TABULO



TABULO - a flexible wall lining perfectly imitates boarded the finish wall. For use inside and outside of the buildings. Colours: Mahogany, Dark Walnut, Golden Oak, Baltic Pearl.

## Dispersion adhesive

### TERMOLEP-D



Ready to use mass dispersion adhesive made for bonding decorative boards TABULO on substrates such as concrete, ceramic bricks, concrete blocks, Expanded clay and sand-lime.

Consumption kg/m<sup>2</sup> 1.8-2.2

## TABULO Protective varnish



TABULO - protective coating for indoor and outdoor use. Stains painted surface giving it an intense shine and color. Additionally protects against water and weather conditions.

Consumption l/m<sup>2</sup> 0.2

## Acrylic Stain



High-quality acrylic stain. Gradually and evenly penetrates the surface of the facade board TABULO joints, making the facade board TABULO staining is uniform. Colour: white, brown.

Consumption l/m<sup>2</sup> 0.005



Paint the wall by primer GRUNLIT.



Redraw lines by laser spirit level.



Using a 4 mm notched trowel, apply adhesive dispersion TERMOLEP-D.



With the help of the angle cut the stepped section TABULO decorative boards.



Glue the decorative board TABULO.



Using the hash to glaze the width of the joint.



With a wet cloth wrapped around your finger collect excess adhesive, while forming a semi-circular recess in the fugue.



Apply acrylic stain on the grout TABULO and corners giving them intense color.



Protect the varnish coating.

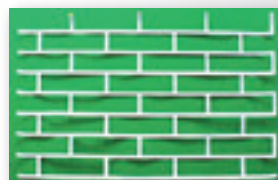
Elevating board **TABULO**  
a method of applying



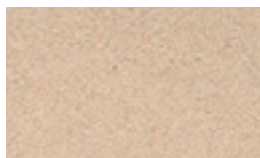
brick imitation **KLINKIERIT****Decorative mortar****KLINKIERIT****Type template brick**

Plaster is designed for protective and decorative façade which after applying it using the available templates mimics the wall brought and clinker bricks. Moreover, it can be used for interior building wall on different substrates such as concrete, brick, cement and lime plaster, drywall. Ingredients: liquid composition containing a binder, acrylic, hydrophobic agents, additives, fungicides, **KOS-BUDPROTECT** formula, soft mineral, mica, dolomite fillers, pigments, silicone oil.

Consumption kg/m <sup>2</sup>	0.9-1.2
-------------------------------	---------



Self-adhesive, water-resistant coated cardboard template impregnation. For using inside and outside of the buildings.

brick imitation **KLINKIERIT** color

KL-01-Sahara



KL-02-Texas



KL-03-Colorado



KL-04-Classic



KL-05-Grafit



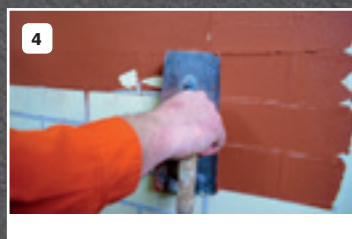
1 Prime the wall by primer GRUNLIT-SL.



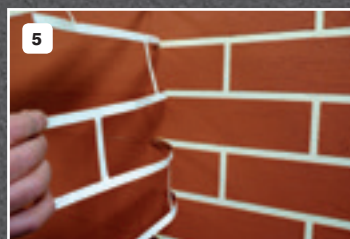
2 Stick the template.



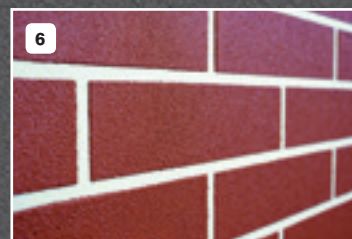
3 Push the template.



4 Apply a decorative mass KLINKIERIT.



5 Peel off the template (to an hour after applying of the decorative mass KLINKIERIT).



6 Finished effect.

brick imitation **KLINKIERIT**  
a method of applying



# elevating plasters

## Acrylic plaster

ACRYLIT „baranek”



## Acrylic plaster

ACRYLIT „kornik”



For decorative, thin-layer plaster coating inside and outside buildings in **KOSBUD** insulating system. White or coloured mix according to **KOSBUD** charts. Staining resistant, enriched with **KOSBUDPROTECT** formula preventing growth of fungi and algae on wall substrates.



For decorative, thin-layer plaster coating inside and outside buildings in **KOSBUD** insulating system. White or coloured mix according to **KOSBUD** charts. Staining resistant, enriched with **KOSBUDPROTECT** formula preventing growth of fungi and algae on wall substrates.

	for grain 1.0 mm*	for grain 1.5 mm	for grain 2.0 mm
Consumption kg/m <sup>2</sup>	1.5-2.0	2.3-2.8	2.8-3.3

	for grain 2.0 mm
Consumption kg/m <sup>2</sup>	2.9-3.3

## Silicone plaster

ACRYLIT-SL „baranek”



## Silicone plaster

ACRYLIT-SL „kornik”



Silicone plaster with increased resistance to staining for decorative, thin-layer plaster coating inside and outside buildings in **KOSBUD** insulating systems. White or coloured mix according to **KOSBUD** charts. Staining resistant, enriched with **KOSBUDPROTECT** formula preventing growth of fungi and algae on wall substrates.



Silicone plaster with increased resistance to staining for decorative, thin-layer plaster coating inside and outside buildings in **KOSBUD** insulating systems. White or coloured mix according to **KOSBUD** charts. Staining resistant, enriched with **KOSBUDPROTECT** formula preventing growth of fungi and algae on wall substrates.

	for grain 1.0 mm*	for grain 1.5 mm	for grain 2.0 mm
Consumption kg/m <sup>2</sup>	1.5-2.0	2.3-2.8	2.8-3.3

	for grain 2.0 mm
Consumption kg/m <sup>2</sup>	2.9-3.3

## Silicone spray plaster

Acrylit-SLN „baranek”



## Silicate plaster

ACRYLIT-ST „baranek”



Silicone plaster for spray-on, with increased resistance to dirt used to make decorative thin-coat plaster both inside and outside the buildings in thermal insulation systems **KOSBUD**. White or dyed by its color according by **KOSBUD COLOR SYSTEM**. Resistant to dirt and sprouting walls of fungi and algae.



Silicate plaster with increased vapour permeability for decorative, thin-layer plaster coating inside and outside buildings in **KOSBUD** insulating system. White or coloured mix according to **KOSBUD** charts. Staining resistant, enriched with **KOSBUDPROTECT** formula preventing growth of fungi and algae on wall substrates.

	for grain 1.5 mm	for grain 2.0 mm
Consumption kg/m <sup>2</sup>	1.6-2.0	1.8-2.2

	for grain 1.5 mm	for grain 2.0 mm
Consumption kg/m <sup>2</sup>	2.3-2.7	2.9-3.3

# elevating plasters

## Mosaic plaster

*MOZALIT „fine-grained”*



For decorating of elevations and inside buildings on different wall substrates, including: concrete, cement and cement-lime plaster, adhesive mortar **TERMOLEP U** in **KOSBUD-ST** insulating system, wood based panels, gypsum-cardboard panels and other substrates (after consulting producer). This plaster is especially recommended for decorating base course surfaces.

The thickness of 0.8-1.2 mm grain.

Consumption kg/m <sup>2</sup>	2.8-3.0
-------------------------------	---------

## Mosaic plaster

*MOZALIT „coarse-grained”*



For decorating of elevations and inside buildings on different wall substrates, including: concrete, cement and cement-lime plaster, adhesive mortar **TERMOLEP U** in **KOSBUD-ST** insulating system, wood based panels, gypsum-cardboard panels and other substrates (after consulting producer). This plaster is especially recommended for decorating base course surfaces.

The thickness of 1.2-1.8 mm grain.

Consumption kg/m <sup>2</sup>	4.3-4.6
-------------------------------	---------

## Grout for mosaic plaster with a bucket



The leaven of acrylic resin is used as a binder for colored aggregate technical **MOZALIT** mosaic plaster.

## Tinted Technical aggregate



Colored quartz aggregate as mineral filler to **MOZALIT** mosaic plaster. Also used for floors based on epoxy resins.

The thickness of 0.8-1.2 mm grain

The thickness of 1.2-1.8 mm grain

## Mineral textured plaster

*MINERALIT „baranek”*



The plaster is intended for making thin decorative plasters, mineral surfaces, eg on concrete or plaster and insulation systems **KOSBUD** on polystyrene or wool. Used on surfaces that are stable humidity and completed the process of hardening. The plaster is suitable for use outdoors and indoors.

	for grain 1.5 mm	for grain 2.0 mm
Consumption kg/m <sup>2</sup>	2.4-2.9	2.8-3.2

## Decorative mortar

*KLINKIERIT*



Plaster is designed for protective and decorative façade which after applying it using the available templates mimics the wall brought and clinker bricks. Moreover, it can be used for interior building wall on different substrates such as concrete, brick, cement and lime plaster, drywall. Ingredients: liquid composition containing a binder, acrylic, hydrophobic agents, additives, fungicides, **KOSBUDPROTECT** formula, soft mineral, mica, dolomite fillers, pigments, silicone oil.

Consumption kg/m <sup>2</sup>	0.9-1.2
-------------------------------	---------





# elevating plasters

## Decorative plaster

### STONEHENGE

Product from the series KOSBUD PRESTIGE LINE



Decorative acrylic plaster imitating natural granite. Extremely resistant to shocks, so well protected base layer plinth of the building. It is used as an expedition vestibules walls, terraces and other places vulnerable to damage. Recommended by architects for public buildings.

Consumption kg/m <sup>2</sup>	4.2-4.6
-------------------------------	---------

## Decorative plaster

### VTG

Product from the series KOSBUD PRESTIGE LINE



Decorative acrylic plaster on the basis of quartz aggregates. By using a special formula pigments we get a very resilient and elastic plaster with a metallic sheen. VTG is used in passageways, corridors, catering establishments, clubs, hair salons, cosmetics and other public places.

	fine-grained	coarse-grained
Consumption kg/m <sup>2</sup>	2.5-2.8	3.1-3.5

# primers

## Acrylic primer

### GRUNLIT with quartz sand



**GRUNLIT** – serves as a primer under a layer of plaster in the work of thermal insulation **KOSBUD** system and priming and reinforcing other substrates wall under the paint and plaster. It regulates ground water conditions and further strengthens and protects them from moisture. The price is for the primer: WHITE / COLORED. You can order a primer without quartz sand.

Consumption kg/m <sup>2</sup>	0.2-0.3
-------------------------------	---------

## Silicone primer

### GRUNLIT-SL with quartz sand



**GRUNLIT-SL** is used as a colour primer for plaster coating in **KOSBUD** building insulation system and for priming and strengthening other wall substrates before applying paint and plaster coating. It regulates water conditions of the substrate and additionally strengthens it and protects against moisture.

Consumption kg/m <sup>2</sup>	0.2-0.3
-------------------------------	---------

## Silicate primer

### GRUNLIT-ST with quartz sand



**GRUNLIT-ST** is used as a colour primer for plaster coating in **KOSBUD** building insulation system and for priming and strengthening other wall substrates before applying paint and plaster coating. It regulates water conditions of the substrate and additionally strengthens it and protects against moisture.

Consumption kg/m <sup>2</sup>	0.2-0.3
-------------------------------	---------

## Quartz primer

### GRUNLIT-K



**GRUNLIT-K** is used as a colour primer with quartz sand for plaster coating in **KOSBUD** building insulation system and for priming and strengthening other wall substrates before applying paint and plaster coating. It significantly increases adherence, regulates water conditions of the substrate and additionally strengthens it and protects against moisture. Recommended as a primer for mosaic plasters.

Consumption kg/m <sup>2</sup>	0.2-0.3
-------------------------------	---------

# primers

## Universal primer

GRUNLIT-U



**GRUNLIT-U** is used for priming wall substrates before applying plaster coating, adhesives and paint coating. It strengthens and regulates substrate absorptivity, reduces paints wastages and increases the adherence of plasters. For use on all absorptive substrates, such as gypsum-cardboard panels, gypsum plasters, cement-lime plasters, concrete floors, gas concrete, bricks, etc.

Consumption kg/m<sup>2</sup> 0.1-0.2

## Deep penetrating primer

GRUNLIT-G



**GRUNLIT-U** is used for priming wall substrates before applying plaster coating, adhesives and paint coating. It strengthens and regulates substrate absorptivity, reduces paints wastages and increases the adherence of plasters. For use on all absorptive substrates, such as gypsum-cardboard panels, gypsum plasters, cement-lime plasters, concrete floors, gas concrete, bricks, etc. Especially recommended for bad bearing condition surfaces.

Consumption kg/m<sup>2</sup> 0.1-0.2

# elevation paints

## Acrylic paint

CHMURKA



For decorative and protective elevation paint layers on all bearing mineral and organic substrates, both new and renovated. It creates permanent and flexible mat layer, highly resistant to negative influence of climate conditions. Available in white and in colours according to **KOSBUD** charts.

Consumption kg/m<sup>2</sup> for a single painting 0.1-0.2

## Silicone paint

CHMURKA-SL



Silicone paint with increased resistance to staining for decorative and protective elevation paint layers on all bearing mineral and organic substrates, both new and renovated. Recommended for renovation painting of historic buildings. It creates permanent and flexible mat layer, highly resistant to negative influence of climate conditions. Available in white and in colours according to **KOSBUD** charts.

Consumption kg/m<sup>2</sup> for a single painting 0.1-0.2

## Silicate paint

CHMURKA-ST



Silicate painting with increased vapour permeability for decorative and protective elevation paint layers on all bearing mineral and organic substrates, both new and renovated. Recommended for renovation painting of historic buildings. It creates permanent and flexible mat layer, highly resistant to negative influence of climate conditions. Available in white and in colours according to **KOSBUD** charts.

Consumption kg/m<sup>2</sup> for a single painting 0.1-0.2



# interior paints

## Latex paint luxury

### ROYAL – COLOR



Top-quality colored satin interior latex paint, resistant to water and scrubbing. Top-quality white satin interior latex paint resistant to water and scrubbing. Recommended for painting representative living quarters and office space and surfaces exposed directly to water, such as kitchens and bathrooms. Mineral substrates, dispersion and coated wallpapers of fiberglass.

Consumption l/m<sup>2</sup> 0.1-0.2

## Latex paint luxury

### ROYAL – WHITE



Top-quality white satin interior latex paint, resistant to water and scrubbing. Top-quality white satin interior latex paint resistant to water and scrubbing. Recommended for painting representative living quarters and office space and surfaces exposed directly to water, such as kitchens and bathrooms. Mineral substrates, dispersion and coated wallpapers of fiberglass.

Consumption l/m<sup>2</sup> 0.1-0.2

## Interior latex paint

### LATEX PAINT – FINISH



Dispersion white paint for interiors on cement-lime, lime, gypsum substrates, gypsum plasters and gypsum boards. Recommended for walls and ceilings, with a low load. Cheap, not splashing, for manual application and spraying.

Consumption l/m<sup>2</sup> 0.1-0.2

## Interior latex paint

### LATEX PAINT – SPRINT



Highly efficient, well opaque dispersion interior paint for manual and spray. Evenly and thoroughly covers the painted surfaces. It has a high degree of whiteness. Especially recommended for painting ceilings and walls in industrial and public buildings. On the ground cement-lime, lime, gypsum plaster, plasterboard.

Consumption l/m<sup>2</sup> 0.1-0.2

# adhesive isulation systems

## Adhesive mortar for polystyrene

### TERMOLEP-S



Adhesive mortar for adhesion of polystyrene boards on substrates such as: cellular concrete, ceramic blocks, concrete blocks, ceramsite concrete and lime-sand blocks. For use within KOSBUD and KOSBUD ST thermal insulation systems, inside and outside buildings.

Consumption kg/m<sup>2</sup> 4.0-5.0

## Adhesive mortar for polystyrene and immersing a grass fibre mat

### TERMOLEP-U



Adhesive mortar for adhesion of polystyrene boards on substrates such as: cellular concrete, ceramic blocks, concrete blocks, ceramsite concrete and lime-sand blocks. Also for immersing a grass fibre mat. For use within KOSBUD and KOSBUD ST thermal insulation systems, inside and outside buildings.

Consumption kg/m<sup>2</sup> 3.3-4.5

# adhesive insulation systems

## White universal adhesive for thermal insulation systems based on polystyrene

### TERMOLEP-U



White adhesive for reinforcing layer thermal insulation systems **KOSBUD** and bonding Styrofoam boards and decorative facade profiles.

Consumption kg/m<sup>2</sup> 3.3-4.5

## Adhesive mortar for mineral wool

### TERMOLEP-WU



Adhesive mortar for adhesion of mineral wool boards on substrates such as: cellular concrete, ceramic blocks, concrete blocks, ceramsite concrete and lime-sand blocks. Also for immersing a grass fibre mat. For use within **KOSBUD** and **KOSBUD ST** thermal insulation systems, inside and outside buildings.

Consumption kg/m<sup>2</sup> 5.0-6.0

# adhesives for tiles

## Adhesive mortar for ceramic tiles

### TERMOLEP-G



The mortar is used for fixing ceramic wall tiles and floor inside buildings. The substrates may be ordinary concrete, cement and cement-lime, cement screeds. This mortar should not be used for screeds with underfloor heating.



Consumption kg/m<sup>2</sup> etwa 3.0

## Adhesive mortar for ceramic tiles

### TERMOLEP-GL



Adhesive mortar used for gluing of ceramic wall and floor tiles inside and outside buildings. Suitable substrates made of regular concrete, cement and cement-lime plasters, cement screeds. This mortar should not be used for screeds with floor heating.



Consumption kg/m<sup>2</sup> etwa 3.0

## Adhesive mortar for gres tiles

### TERMOLEP-GR



Adhesive mortar used for gluing of gres tiles as well as glaze and terracotta on horizontal substrates not exposed to significant deformation due to changes of temperatures. This mortar should not be used for laying tiles on screeds with floor heating.



Consumption kg/m<sup>2</sup> etwa 3.0

## Elastic ceramic adhesive mortar

### TERMOLEP-EL



Adhesive mortar **TERMOLEP-EL** is used for all kinds of small size and big size ceramic tiles, i.e. glaze, terracotta, clinker, gres, for stiff substrates and prone to deformations, inside and outside buildings. Recommended for terraces and screeds with floor heating.



Consumption kg/m<sup>2</sup> etwa 3.0



# adhesives for tiles

## White highly elastic adhesive for stone

### TERMOLEP-K



White, highly elastic adhesive for ceramic tiles and natural stone. A product with higher strength, reduced flowability and increased open time of drying. Reduced to a minimum the risk of calcareous efflorescence due to the use of thras. It can be used on substrates heated and refrigerated. For renovation of old ceramic substrates using the «plate on the plate».

Consumption kg/m <sup>2</sup>	etwa 3.0
-------------------------------	----------

# masonry mortars and plastering

## Rough coat cement

### SZPRYC



SZPRYC is used to perform a preliminary renderings, which creates a layer of tack between the wall and cement-lime plaster inside buildings. And used under load-bearing walls and partition walls made of cellular concrete blocks, bricks, clay tiles, silicate blocks, walls and ceilings of reinforced concrete.

	layer thickness 1 mm
Consumption kg/m <sup>2</sup>	4.0-5.0

## Cement-lime plaster

### Plaster-CW gray



**Plaster CW** is factory-prepared plastering mortar based on cement, aggregates graded quartz with the addition of measures to improve the binding and adhesion. The mortar is designed for machine and manual plastering walls with all available building materials. The plaster finely granular granulation from 0.1 mm to 0.5 mm.

	layer thickness 1 mm
Consumption kg/m <sup>2</sup>	1.3

## White cement-lime plaster

### Plaster-CW white



**Plaster CW** is factory-prepared plastering mortar based on white cement, aggregates graded quartz with the addition of measures to improve the binding and adhesion. The mortar is designed for machine and manual plastering walls with all available building materials. The plaster finely granular granulation from 0.1 mm to 0.5 mm.

	layer thickness 1 mm
Consumption kg/m <sup>2</sup>	1.3

# gypsum plasters, plasters, fillers

## Gypsum plaster manual

GTR



Gypsum plaster GTR is a gypsum plaster for single-layer manual application in dry interior spaces with air relative humidity up to 70%. It is a mix of gypsum, mineral fillers, light weight aggregates and modifiers.

	layer thickness 1 mm
Consumption kg/m <sup>2</sup>	ok. 0.8

## Gypsum building plaster

GS 100



For initial smoothing of substrates during interior finishing work. It is possible to apply layers up to 1 cm. Excellent for filling all kinds of defects, scratches, cracks in plasters. Suitable also for wall plugs and concealing electric installations.

	layer thickness 1 mm
Consumption kg/m <sup>2</sup>	ok. 1.0

## White gypsum surface finishing

GS 200



For gypsum finishing coats on walls and ceiling surfaces. Used as upper layer for grinding. The thickness of an applied layer should be between 1mm – 2 mm. Mixture of finely ground gypsum, white meal and modifiers. Due to high efficiency and good price of the product significant reduction in costs together with high quality was obtained.

	layer thickness 1 mm
Consumption kg/m <sup>2</sup>	ok. 1.0

## Luxury gypsum surface finishing

GS 300



Highest quality product for walls and ceilings grinding. Gypsum-polymer finishing, snow white colour is obtained as a result of using white raw materials: gypsum and milled marble. Specially chosen improving components enable easy preparation, uniform applying and filling. The highest class of surface finishing. Thickness of an applied layer between 1mm - 2 mm.

	layer thickness 1 mm
Consumption kg/m <sup>2</sup>	ok. 1.0

## Dolomite gypsum surface finishing

GS 400



Ready-to use finishing packed into buckets. Used for initial and upper layer of finishing coat. Ideal for manual work or using aggregate on interior substrates such as: concrete, gypsum plasters, cement-lime plasters and gypsum – cardboard panels. For mechanical use suitable amount of water should be added. After applying the mass dries very quickly and it is easy to grind. Thickness of a single layer cannot exceed 3 mm. It is possible to apply multiple layers.

	layer thickness 1 mm
Consumption kg/m <sup>2</sup>	ok. 1.0

## Fiber-reinforced filler

GS 500



Fiber-reinforced filler GS500 is used for firm pointing of gypsum-cardboard panels. Using the latest generation of fibres gives an effect of micro-reinforcement increasing bonding strength. It prevents cracks from appearing and spreading. Additionally, the strength is improved due to alfa plaster.

	layer thickness 1 mm
Consumption kg/m <sup>2</sup>	ok. 0.8



# gypsum plasters, plasters, fillers

## Universal gypsum based adhesive

KGU



Instant preparation. Ideal for gluing cardboard-gypsum panels. Also for construction of walls made from PRO-MONTA panels. Using fine fraction filler does not block interlocking brick filler during construction.

Consumption kg/m <sup>2</sup>	3.0-5.0
-------------------------------	---------

# water insulations

## Water insulation membrane – exterior

FOLIT-Z



For terraces for balconies for bathrooms for high humidity rooms. Ready to use, single-component, semi-fluid mass for damp-proof sealing coats for building substrates under the ceramic covering inside and outside buildings: balconies, terraces, wet rooms, ground ceilings etc.

Consumption kg/m <sup>2</sup> per layer	0.7-1.0
--	---------

## Water insulation cement mortar

HYDROLIT



Recommended especially for terraces for balconies for bathrooms for wet rooms. Elastic two-component mortar for water resistant insulations of balconies, basements, terraces and insulation of foundation. Because of woven fibre glass especially recommended for places exposed to changeable weather conditions. For insulation of water reservoirs and swimming pools. Suitable also for water protective insulations in wet rooms exposed to moisture in industrial and housing buildings. It can also be used for sealing substrates in bathrooms, shower cabs, kitchens and basements.

Consumption kg/m <sup>2</sup> per layer	1.5-1.6
--	---------

## Flexible asphalt-rubber mass slightly resin-modified

IZOLIT-G



Bitumen primer for priming and water insulation. Flexible bitumen mass for priming concrete and steel substrates, sheet metals, roof felts and eternit (under upper water insulation layers), strip footings, foundations, underground parts of buildings, roofs. For individual performance of seamless water insulation layers of light weight insulation type. Especially recommended as base under all types of heat-weldable roofing membrane. For outside buildings only. Water, weak acids and alkalis resistant. Contains organic solvent.

Consumption kg/m <sup>2</sup> per layer	0.2-0.3
--	---------

## Asphal - rubber mass resin-modified

IZOLIT-P



For maintenance of roofs coverings and water insulations. Flexible bitumen mass for maintenance of roofs coverings from roof felts, seamless water insulation layers, technical fabrics - reinforced laminates, upper and proper watertight layers of underground parts of the buildings and industrial water reservoirs. For outside buildings only. Water, weak acids and alkalis entirely resistant. Very flexible protective layer. Contains organic solvent.

Consumption kg/m <sup>2</sup> per layer	0.5-0.8
--	---------

# water insulations

## Dispersive asphalt – rubber mass

### DYSPERLIT



For water insulation of underground parts of buildings. For roofs coverings renovations. Water dispersion of synthetic rubber modified asphalts for renovation and maintenance of roofs coverings, technical fabrics – reinforced seamless roofs coverings, underslab humidity resistant insulations of basements, garages, terraces, balconies and for protection of underground parts of buildings, i.e. strip footings, foundations etc against humidity. Resistant to weather conditions, water, weak acids, alkalis and aggressive substances contained in soil. Dysperlit mass can be used directly with polystyrene.

Consumption kg/m <sup>2</sup> per layer	0.8-1.2
--	---------

## Dispersive asphalt – rubber mass

### STYRLIT



For gluing insulation panels (polystyrene, hydro polystyrene, extruded polystyrene). For water insulation of underground parts of buildings.

Highly modified bitumen – rubber mass in a form of paste with excellent adherence to concrete, brick walls, wood, gypsum-cardboard panels etc. As underslab water insulation of terraces, balconies, basements, garages, irregular shape surfaces and also for permanently flexible watertight insulations of underground parts of buildings (strip footings, foundations etc). Gluing polystyrene and extruded panels. STYRLIT mass can be

used directly with polystyrene. For outside buildings, under basements, garages, balconies, terraces etc.

	hydroinsulation	styrofoam gluing
Consumption kg/m <sup>2</sup> per layer	ok. 1.2	0.8-2.0

## Plastic roof cement

### OLKOLIT



Roofing Adhesive. Plastic bitumen mass. OKOLIT is designed for repair of damages and filling defects in roof coverings (breakdowns, cracks, gaps, bubbles, leaks, etc) on slightly wet and dry substrates, for local water insulation seals, elastoplastic seamless water insulation underground layers, external tanking etc. For surface binding (gluing) of roof flashing and gluing of roof flashing between themselves. For sealing of all kinds of openings through building constructions. For outside buildings.

Consumption kg/m <sup>2</sup> per layer	ok. 1.2
--	---------

## Plastic roof cement roofing adhesive

### OLKOLIT-PLUS



For use underwater, for use on wet surfaces. Plastic bitumen mass in a form of paste, highly modified with synthetic rubber, contains reinforcing fibres and chemical modifiers so it can be used on wet surfaces. The layer formed out of OKOLIT PLUS is exceptionally elastoplastic, capable to resist even significant ground movements, water proof. Resistant to weather conditions, water, weak acids, alkalis and aggressive substances contained in soil. OKOLIT PLUS is designed for repair of damages and filling defects in roof coverings (breakdowns, cracks, gaps, bubbles, leaks, etc) on wet and dry substrates, for local water insulation seals,

elastoplastic seamless water insulation underground layers, external tanking etc. For surface binding (gluing) of roof flashing and gluing of roof flashing between themselves. For sealing of all kinds of openings through building constructions. It can be used directly with polystyrene. For outside buildings.

Consumption kg/m <sup>2</sup> per layer	1.5-1.6
--	---------

## COLD BITUMEN ADHESIVE



Roofing felt adhesive. For water protective layers. Bitumen mass for gluing roofing felt to substrates, gluing layers of roofing felt between themselves and for seamless water protective layers of underground parts of buildings. For outside buildings. Contains organic solvent.

Consumption kg/m <sup>2</sup> per layer	0.6-1.0
--	---------

# foams, weld

## Polyurethane gun

### FOAM



Single-component polyurethane mounting and sealing foam, highly efficient, for sealing window and door frames, windowsills, blinds and stair steps during installation. Filling and insulation of pipe and cable openings, central heating and water supply and sewage components. Filling and sound insulation of partition walls, prefabricated elements in frame structures, thermal and acoustic insulation of floors, attics roofs, air conditioning systems. Filling cracks in wall and ceiling fittings.

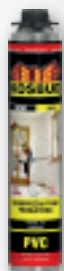
## Polyurethane

### FOAM



Single-component polyurethane mounting and sealing foam, highly efficient, for sealing window and door frames, windowsills, blinds and stair steps during installation. Filling and insulation of pipe and cable openings, central heating and water supply and sewage components. Filling and sound insulation of partition walls, prefabricated elements in frame structures, thermal and acoustic insulation of floors, attics roofs, air conditioning systems. Filling cracks in wall and ceiling fittings.

## Pistol Low-pressure Foam 45L



One-component polyurethane foam in the version with gun applicator is designed for professional installation, sealing and sound-proofing. Low-pressure formula eliminates warping frames and ensures proper filling slots.

## Polyurethane Adhesive for Styrofoam



Low pressure one-component PU polyurethane adhesive version for gun applicator designed for bonding foamed polystyrene boards in thermal insulation systems BSO and boards EPS and XPS thermal insulation of strip footings and mundane parts of buildings, basements and so on.

#### Features:

- easy and convenient to use, ensuring quick completion of works related with heating (Preliminary curing after 2 hours, full cure after 24 hours),
- very good adhesion to bituminous (solvent-free masses KMB) and any mineral surfaces
- Excellent adhesion to concrete, mineral, ceramic, plasters, etc.
- Used in a wide temperature range

## The means for removing fungi and lichens

### BIOLIT



Bioactive agent based on highly effective means of destroying lichens and fungi. Very effective in the elimination of biological contaminants harmful to the building. Designed for cleaning and maintenance of structural elements of brick, concrete and all building materials such as ceramic, stone, aerated concrete-ton. Excellent with restoration of building facades and all kinds of paint and plaster.

Consumption l/m<sup>2</sup> 0.1

## The means for removing fungi and lichens

### BIOLIT PLUS



Concentrated bioactive agent based on highly effective means of destroying lichens and fungi. Very effective in the elimination of biological contaminants harmful to the building. Designed for cleaning and maintenance of structural elements of brick, concrete and all building materials such as ceramic, stone, aerated concrete. Excellent with restoration of building facades and all kinds of paint and plaster. Peculiarly recommended for marking with spray method at using pressure flannels.

Consumption l/m<sup>2</sup> 0.1



# supplementary materials

## Quartz sand



Improved sand fraction 0 - 0.5 mm. Intended to: for the production of dry blends, of mortars, plaster, of glue and self-levelling mass also as the filler, addition to blends of quartz different applications, to resinous composites, for sandblasting in the cover of the water broom, for sprinkling ice, in aquaria, terrariums, of filling trays up, flowerpots, sandpits.

## Fiberglass mesh



Fiberglass mesh 145 g/m<sup>2</sup>.  
Width 100 cm, length 50 m.  
Detailed offer at sales representatives.

## Fiberglass mesh with measuring tape



Fiberglass mesh 160 g/m<sup>2</sup>.  
Width 110 cm, length 45 m.  
Detailed offer at sales representatives.

## Stakes to systems of warmer weathers with pin plastic / metal



In stock wide range of links of the isolation to the polystyrene foam and the rock wool. Detailed available offer at sales representatives.

# accessories for plastering

## Spray aggregate PST-3 STANDARD



Spray aggregate PST-3 this is portable, disposable, oil piston compressor with direct drive professional applications. It has a pressure switch with relief valve, starting particularly useful when starting at low temperatures. An additional advantage is the air transport wheels and two additional air output: the output of the standard quick coupler directly from the tank and output of „Screw“, making it ideal for use with plastering machines. With the help unit you can perform:

- painting
- Primer
- apply plasters type of lamb
- Decorative weight
- Spray wallpaper
- coats ready

### The Standard is includes:

- compressor,
- tube 25m or 2x12,5m,
- pistol with four tanks (tank plaster 2L and 3L and reservoir

- to primer and paints 2l and 3l)
- set of nozzles for plasters (4 pcs.)
- set of nozzles for paints (3 pcs.)

### Technical details:

Theoretical yield (on suction): 340 l/min  
Effective yield (at a pressure of 7 bar): 184 l/min  
Nominal pressure: 10 bar  
Fuel tank capacity: 2x11 l  
Head type: GV 34  
Number of cylinders: 2  
Number of degrees of compression: 1  
Turnover on the compressor shaft: 1450 min-1  
Maximum engine power: 3,0 kW/2,2 kW  
Supply voltage / frequency: 230 V/50 Hz  
Weight: 50 kg

# accessories for plastering

## Spray aggregate

### PST-2 STANDARD



Spray aggregate PST-2 is a portable, disposable, oil piston compressor with direct drive of professional applications. It has a pressure switch with relief valve, starting particularly useful when starting at low temperatures. With the help of aggregate you can do:

- painting
- Primer
- apply plasters type of lamb
- decorative masses
- Spray wallpapers
- coats ready

#### The Standard is includes:

- compressor,
- tube 25m or 2x12,5m,
- pistol with four tanks (tank plaster 2L and 3L and reservoir to primer and paints 2l and 3l)
- set of nozzles for plasters (4 pcs.)
- set of nozzles for paints (3 pcs.)

#### Technical details:

Theoretical yield (on suction): 340 l/min  
 Effective yield (at a pressure of 7 bar): 184 l/min  
 Nominal pressure: 10 bar  
 Fuel tank capacity: 24 l  
 Head type: GV 34  
 Number of cylinders: 2  
 Number of degrees of compression: 1  
 Turnover on the compressor shaft: 1450 min-1  
 Maximum engine power: 3,0 kW/2,2 kW  
 Supply voltage / frequency: 230 V/50 Hz  
 Dimensions (l. x width. x height.): 480x640x740 mm  
 Weight: 40 kg

## Spray aggregate

### PST-5 STANDARD



Spray aggregate PST-5 is a set of compressor of a simpler construction, less technically advanced. It can be performed:

- paint
- Primer
- apply plasters type of lamb
- Decorative weight
- Spray wallpaper
- coats ready

#### The Standard is includes:

- compressor,
- tube 25m or 2x12,5m,
- pistol with four tanks (tank plaster 2L and 3L and reservoir to primer and paints 2l and 3l)
- set of nozzles for plasters (4 pcs.)
- set of nozzles for paints (3 pcs.)

#### Technical details:

Theoretical yield (on suction): 400 l/min  
 Effective yield (at a pressure of 4,5 bar): 240 l/min

Nominal pressure 8 bar  
 Fuel tank capacity 50 l  
 Engine power 3,0 kW/2,3 kW  
 Supply voltage / frequency 230 V/50 Hz  
 Dimensions 700x700x450 mm  
 Weight 47 kg  
 LwA (DB): 92

## Spray Gun

### PS-1



Spray gun PS-1 is a multifunctional device that allows to perform all kinds of decorative work. The use of a gun includes discharging those decorative coatings as

- external and internal plasters type of lamb
- Spray wallpaper
- Primers
- paints
- other decorative additions (glass beads, glitter, crisps)

#### The gun consists of:

- Gun
- 2 tanks and plaster 3l 2l
- 2 tanks to the ground and paint 3l and 2l
- nozzles for plastering (4 pieces)
- nozzles for paints (3 pieces)

## Spray Gun

### PS-2



Spray gun PS-2 is a multifunctional device that allows to perform all kinds of decorative work. The use of a gun includes discharging those decorative coatings as

- external and internal plasters type of lamb
- Spray wallpaper
- Primers
- paints
- other decorative additions (glass beads, glitter, crisps)

#### The gun consists of:


- Gun
- 2 tanks and plaster 3l 2l
- 2 tanks to the ground and paint 3l and 2l
- nozzles for plastering (4 pieces)
- nozzles for paints (3 pieces)

						
AK-200	AK-210	AK-220	AK-230	AK-240	BK-250	AK-270
						
AK-201	AK-211	AK-221	AK-231	AK-241	BK-251	AK-271
						
bK-202	CK-212	AK-222	AK-232	AK-242	DK-252	AK-272
						
BK-203	AK-213	CK-223	AK-233	BK-243	BK-260	BK-280
						
CK-204	BK-214	DK-224	BK-234	CK-244	CK-261	CK-281
						
DK-205	CK-215	CK-225	CK-235	CK-245	CK-262	CK-282
						
AK-400	BK-350	AK-360	AK-370	AK-430	AK-440	AK-450
						
BK-401	BK-351	AK-361	AK-371	AK-431	AK-441	AK-451
						
CK-402	DK-352	BK-362	BK-372	AK-432	BK-442	BK-452
						
BK-410	DK-353	BK-363	BK-373	BK-433	BK-443	BK-453
						
BK-411	DK-354	BK-364	CK-374	BK-434	CK-444	CK-454
						
DK-412	DK-355	CK-365	DK-375	DK-435	DK-445	DK-455



**ACRYLIT / ACRYLIT -SL / ACRYLIT-ST / CHMURKA / CHMURKA-SL / CHMURKA-ST**

						
BK-290	BK-310	AK-520	BK-330	DK-340	BK-380	AK-390
						
DK-291	CK-311	AK-521	CK-331	BK-341	BK-381	BK-391
						
DK-292	CK-312	BK-522	DK-332	CK-342	CK-382	BK-392
						
BK-300	BK-320	BK-523	DK-333	DK-343	CK-383	DK-393
						
CK-301	DK-321	CK-524	DK-334	DK-344	CK-384	CK-394
						
DK-302	DK-322	DK-525	DK-335	DK-345	CK-385	DK-395

			
AK-470	BK-480	AK-500	AK-510
			
AK-471	BK-481	AK-501	AK-511
			
AK-472	CK-482	AK-502	AK-512
			
BK-473	AK-490	BK-503	BK-513
			
CK-474	BK-491	CK-504	CK-514
			
DK-475	CK-492	DK-505	DK-515





**BRACIA KOSIŃSCY SP. J.**

Dziękowizna 16

05-300 Mińsk Mazowiecki

Tel.: +48 (25) 756 38 88, Fax: +48 (25) 756 38 45

**[www.kosbud.com.pl](http://www.kosbud.com.pl)**

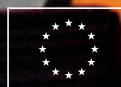


**INNOVATIVE ECONOMY**  
NATIONAL COHESION STRATEGY



MINISTRY  
OF ECONOMY

**EUROPEAN UNION**  
EUROPEAN REGIONAL  
DEVELOPMENT FUND



**Project co-financed by the European Regional Development Fund  
under the Operational Programme Innovative Economy**